



VARNA COATS PRIVATE LIMITED

"V - TUFF" : EPOXY POLYESTER - (HYBRID) - GLOSSY - FINISH

(Page No - 1)



11-21-009
Classic White



11-21-037
Versa White



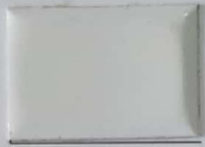
11-21-060
IFB White



11-21-112
Milltec White



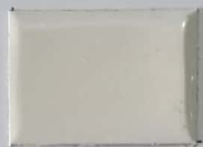
11-21-089
Signal White
RAL - 9003



11-21-016
Mag White



11-21-024
Dental White



11-21-006
Bucket White
RAL - 9016



11-21-048
Traffic White
RAL - 9016



11-21-086
Pure White
RAL - 9010



11-21-100
Buhler White - Std
NCS - 1000 - S



11-21-007
Buhler White - OLD



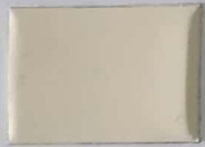
11-21-187
Ivory - L



11-21-017
Light Ivory



11-21-047
Ivory Dark



11-21-043
Cream
RAL - 9001



11-21-095
Cream
Otis Ivory



11-21-105
Ivory - S
RAL - 1013



11-21-106
Ivory (Niru)



11-21-104
Ivory (N)



11-21-093
Desert Sand



11-21-193
Ivory - (V)



11-21-134
Havells Grey - (K)



11-21-070
Havells Grey
RAL - 7035 - Light Grey



11-21-159
Papyrus White
RAL - 9018



11-21-076
Pebble Grey
RAL - 7032



11-21-088
Otis Munsell Grey
RAL 7040 - Window Grey



11-21-023
Munsell Grey
RAL 7045 - Tele Grey - 1



11-21-190
Platinum Grey
RAL - 7036



11-21-050
Otis Light Grey
IS 631



11-21-094
DA Grey - O



11-21-010
IS 632 DA Grey
RAL - 7031 - Blue Grey



11-21-163
Basalt Grey
RAL - 7012



11-21-183
RAL - 7024 - Graphite Grey
/ Maruthi Grey
IS - 671 - Middle Graphite



11-21-033
IS 633 - Anthracite Grey
RAL - 7016



"V - TUFF" : EPOXY POLYESTER - (HYBRID) - GLOSSY - FINISH

(Page No - 2)



11-21-110
Zinc Yellow
RAL - 1018



11-21-036
Colza Yellow
RAL - 1021



11-21-044
IS 355 - Lemon Yellow
RAL - 1023



11-21-012
Golden Yellow
RAL - 1003 - Signal Yellow



11-21-013
Golden Yellow TC
RAL - 1028 - Melon Yellow
IS 356 - Golden Yellow



11-21-092
Pure Orange
RAL - 2004



11-21-069
Bright Red Orange
RAL - 2008



11-21-034
International Orange
IS 592



11-21-025
Orange



11-21-067
Red Orange
RAL - 2001



11-21-021
Sufex Red
IS 574 - India Saffron



11-21-032
RAL - 3020 - Traffic Red
IS 537 - Signal Red



11-21-003
P.O Red
RAL - 3002 - Carmine Red



11-21-169
Pink (N)
RAL - 3015 - Light Pink



11-21-042
Signal Violet
RAL - 4008



11-21-075
Otis Cool Blue



11-21-168
Cool Blue (N)



11-21-026
Otis Blue
RAL - 5015 - Sky Blue



11-21-081
Deep Blue



11-21-078
RAL - 5005 - Signal Blue
RAL - 5017 - Traffic Blue



11-21-022
Signal Blue
RAL - 5005



11-21-052
Pepsi Blue
IS 108 - Aircraft Blue



11-21-073
Cobalt Blue
RAL - 5013



11-21-027
IS 105 - Oxford Blue
RAL - 5003



11-21-194
Violet Blue
RAL - 5000 (P)



11-21-124
Yellow Green
RAL - 6018



11-21-155
Brilliant Green (P)



11-21-057
Brilliant Green
RAL - 6032 - Signal Green



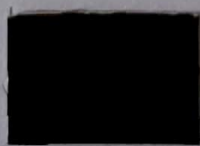
11-21-008
Bus Green
IS - 299



11-21-151
Grey (N)



11-21-014
Brown



11-21-004
Black
RAL - 9011 - Ral - 9005

Epoxy Polyester - Glossy Finish - Tip No - 1			
Curing Temp		185 Deg Cent for 12 min	
In case of following problem Ref Point No			
Nature of Problem	Point No	Nature of Problem	Point No
Low Gloss	4	Pin Hole	7
Orange Peel	6	Usage	Indoor Application



"V - SHIELD" : PURE POLYESTER - GLOSSY - FINISH

(Page No - 3)



12-21-003
Pure White
RAL - 9010



12-21-089
Signal White Std
RAL - 9003



12-21-112
Excel White



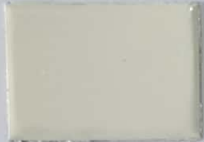
12-21-051
Milltec White



12-21-107
Super White



12-21-022
Signal White



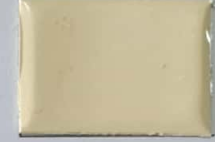
12-21-102
Light Ivory



12-21-108
Ivory (J)



12-21-090
Ivory (K)



12-21-110
Ivory (JK)



12-21-006
IS 365 Vellum
RAL - 1000 - Green Beige



12-21-007
IS 629 - Quaker Grey
RAL - 7034 - Yellow Grey



12-21-028
IS 397 - Jasmine Yellow
RAL - 1018 - Zinc Yellow



12-21-097
Volvo Yellow
IS 356 - Golden Yellow
RAL - 1006 - Maize Yellow



12-21-061
Leeboy Yellow



12-21-069
Hitachi Orange
RAL - 2009



12-21-074
Suffex Red (P)
IS 592 - International Orange



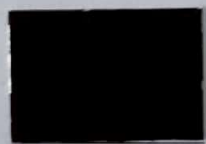
12-21-019
PO Red
RAL - 3028 - Pure Red



12-21-008
IS 537 - Signal Red
RAL - 3020 - Traffic Red



12-21-091
Maroon Burgundy
RAL - 3004 - Purple Red



12-21-101
Anatic Red
RAL - 3007 - Black Red



12-21-079
Nut Brown
IS 412 - Dark Brown



12-21-004
Pepsi Blue



12-21-077
Green (A)



12-21-020
Onan Green



12-21-026
Light Grey
RAL - 7035



12-21-084
Munshell grey
RAL - 7040 - Window Grey



12-21-023
Light Grey
IS 631



12-21-068
Hitachi Grey



12-21-065
DA Grey
IS 632
RAL - 7031 - Blue Grey



12-21-067
Dark Grey
IS 633 - AF Blue Grey



12-21-049
Leeboy Grey
IS 671 - Middle Graphite
RAL - 7024 - Graphite Grey



12-21-024
Black Grey
RAL - 7021



12-21-001
Jet Black
RAL - 9005



12-21-064
Clear

Pure Polyester - Glossy Finish - Tip No - 2			
Curing Temp		200 Deg Cent for 12 min	
In case of following problem Ref Point No			
Nature of Problem	Point No	Nature of Problem	Point No
Low Gloss	4	Pin Hole	7
Orange Peel	6	Usage	Outdoor Application



"V - TUFF" : EPOXY POLYESTER - (HYBRID) - SEMI GLOSSY - FINISH

(Page No - 4)



11-22-052
Signal White
RAL - 9003



11-22-132
Wipro Signal White
RAL - 9003



11-22-009
Broken White
RAL - 9016 - Traffic White



11-22-116
Y033 White
RAL - 9010



11-22-087
Pure White Std
RAL - 9010



11-22-026
Marble White
RAL - 9002 - Grey White



11-22-004
ABB Beige



11-22-100
Papyrus White
RAL - 9018



11-22-040
Light Grey
RAL - 7035



11-22-196
Ideal Grey
RAL - 7038



11-22-149
K T N Grey



11-22-002
Pebble Grey
RAL - 7032



11-22-147
Lime Green
RAL - 110 9010



11-22-013
Light Adm Grey
IS 697



11-22-030
Opaline Green
IS 275



11-22-011
Buhler Green
NCS S 2040 -B60G



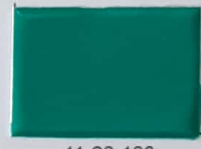
11-22-192
Pantone - 3395 - C



11-22-020
Yellow Green
RAL - 6018



11-22-082
Traffic Green
RAL - 6024



11-22-193
Ocean Green



11-22-191
Sky Blue
Pantone 290 C



11-22-145
Pantone - 631 - C



11-22-041
Light Blue
RAL - 5012



11-22-188
Sky Blue
RAL - 5015



11-22-014
Nordson Blue
IS 166 - French Blue



11-22-058
Zinc Yellow Primer



11-22-042
Brown Beige
RAL - 1011



11-22-019
IS 557 - Light Orange
RAL - 2011 - Deep Orange



11-22-036
Yellow Orange
RAL - 2000



11-22-137
IS 537 - Signal Red
RAL - 3020 - Traffic Red



11-22-023
Light Grey
IS 631



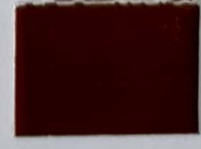
11-22-031
Smoke Grey
IS 692



11-22-181
Tele Grey
RAL - 7046



11-22-017
DA Grey
IS 632



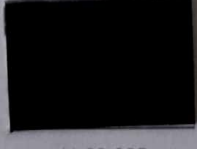
11-22-209
Brown E
IS 415 - India Brown



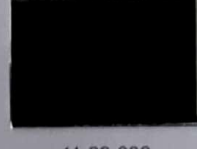
11-22-081
Umbr Grey
RAL - 7022



11-22-033
Graphite Grey
RAL - 7024



11-22-025
RAL 7016 - Anthracite Grey
IS 633 - AF Blue Grey



11-22-006
Black
RAL - 9005 - Jet Black



11-22-122
Black
RAL - 9005 - Jet Black

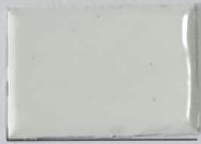


"V - SHIELD" : PURE POLYESTER - SEMI GLOSSY - FINISH

(Page No - 5)



12-22-020
Signal White
RAL - 9003



12-22-061
Traffic White
RAL - 9016



12-22-089
Broken White



12-22-013
Pure White
RAL - 9010



12-22-033
Bucket White



12-22-101
Ivory (A)



12-22-028
Cream



12-22-002
Light Grey
RAL - 7035



12-22-005
Pebble Grey
RAL - 7032



12-22-006
Misty Grey
RAL - 7040 - Window Grey



12-22-025
Silver Grey
RAL - 7001



12-22-011
Dusty Grey
RAL - 7037



12-22-008
Light Blue
RAL - 5012



12-22-010
TATA Blue



12-22-090
Yellow (A)
RAL - 1004 - Golden Yellow



12-22-027
Yellow Green
RAL - 6018



12-22-122
Westrup Green
RAL - 6024 - Traffic Green



12-22-072
RAL 3020 - Traffic Red
IS 536 - Fire Red



12-22-102
Vermilion
RAL - 2002



12-22-135
Pot Brown



12-22-129
Ochre Brown
RAL - 8001



12-22-128
Orange Brown
RAL - 8023



12-22-130
Clay Brown
RAL - 8003



12-22-155
Golden Brown (LC)
IS 489 - Leaf Brown



12-22-114
Signal Brown
RAL - 8002



12-22-134
Chocolate Brown
RAL - 8017



12-22-057
Chocolate Brown
RAL - 8017
IS 457 Chocolate



12-22-099
BCB Brown (J)



12-22-156
Hardware Brown



12-22-014
Graphite Grey
RAL - 7024



12-22-113
Volvo Grey



12-22-060
L&T Grey
RAL - 7021 - Black Grey



12-22-018
Black
RAL - 9005

Semi Glossy Finish - Tip No - 3

Epoxy Polyester - Indoor Application - 185 Deg for 12 min

Pure Polyester - Outdoor Application - 200 Deg for 12 min

In case of following problem Ref Point No

Nature of Problem	Point No
Orange Peel	6
Pin Hole	7



"V - TUFF" : EPOXY POLYESTER - (HYBRID) - MATT - FINISH

(Page No - 6)



11-23-024
Signal White
RAL - 9003



11-23-106
Frosty White



11-23-030
Pure White
RAL - 9010



11-23-196
Premium White D



11-23-077
Wimborne white
RAL - 9010 - N



11-23-178
CT White



11-23-194
Lenin White



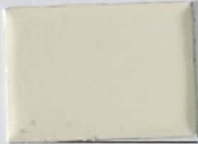
11-23-126
Traffic White



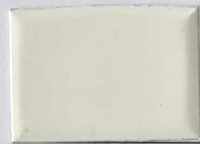
11-23-147
Precision White



11-23-137
Philips Dead Matt White



11-23-014
Philips Std



11-23-122
Milky White



11-23-121
Ivory
RAL - 1013



11-23-049
Cream



11-23-097
OJ White



11-23-012
Bucket White



11-23-034
Ivory



11-23-161
Tele Grey 4
RAL - 7047



11-23-006
Light Grey
RAL - 7035



11-23-025
Window Grey
RAL - 7040



11-23-160
PS Grey



11-23-040
Pebble Grey
RAL - 7032



11-23-039
Munshell Grey
RAL - 7045 - Tele grey 1



11-23-041
Silver Grey



11-23-010
Dusty Grey
RAL - 7037



11-23-026
Slate Grey
RAL - 7015



11-23-003
DA Grey
IS 632



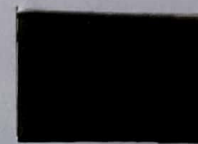
11-23-068
Graphite Grey
RAL - 7024



11-23-004
Graphite Grey



11-23-016
Black Grey
RAL - 7021



11-23-019
Olive Drab
IS 298 - Scami Green



11-23-032
Traffic Yellow
RAL - 1023



11-23-055
PO Red
RAL - 3001 - Signal Red



11-23-054
Sky Blue
RAL - 5015



11-23-023
Ultra Marine Blue
RAL - 5002



"V - TUFF" : EPOXY POLYESTER - (HYBRID) - MATT - FINISH

(Page No - 7)



11-23-108
Beech Brown
IS 490



11-23-180
Chestnut Brown
RAL - 8015



11-23-042
Maroon
IS 541



11-23-187
Chocolate Brown
RAL - 8017



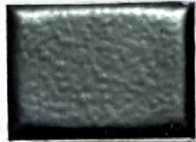
11-23-018
Brown Std



11-23-037
Dead Matt Black



11-23-001
Black Matt
RAL - 9005



11-23-048
Spl Black Matt



11-23-051
Otis Black Matt



11-23-175
Premium Black
RAL - 9005

"V - SHIELD" : PURE POLYESTER - MATT - FINISH



12-23-019
Pure White
RAL - 9010



12-23-044
White Aluminium
RAL - 9006



12-23-008
Orient Red
RAL - 3031



12-23-050
B C Brown



12-23-031
Black S

Texture Finish - Tip No - 4	
Epoxy Polyester- Indoor App.190 Deg. -12 min	
Pure Polyester- Outdoor App.200 Deg. -12 min	
In case of following problem Ref Point No	
Nature of Problem	Point No
Orange Peel	6
Pin Hole	7

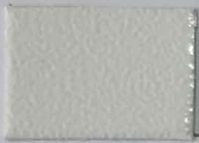


National Award Winner - 2008



"V - TUFF" : EPOXY POLYESTER - (HYBRID) - STRUCTURE - FINISH

(Page No - 8)



11-24-077
Signal White
RAL - 9003 - Std



11-24-042
Ramson White



11-24-276
Homag White



11-24-219
Tetra White



11-24-235
DMG White



11-24-194
Grey White
RAL - 9002 - BFW



11-24-073
Traffic White
RAL - 9016 - Std



11-24-099
Pure White
RAL - 9010 - Std



11-24-036
Broken White
RAL - 9002 - Grey White



11-24-096
Ivory - S



11-24-047
Oyster White
RAL - 1013



11-24-160
Light Ivory
RAL - 1015



11-24-139
Off White C C 21



11-24-016
Ivory Dark



11-24-127
Grey White
RAL - 9002 - BHEL



11-24-218
RAL - 7032 - Pace



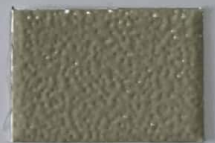
11-24-213
Pebble Grey
RAL - 7032 - SS



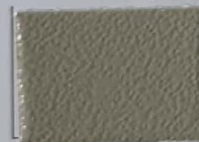
11-24-075
Siemens Grey



11-24-027
Pebble Grey - Std
RAL - 7032 - Std



11-24-065
Pebble Grey BS
RAL - 7032 - BS



11-24-049
Siemens Grey - Std
RAL - 7044 - Silk Grey



11-24-204
Siemens Grey - EL



11-24-205
Diamond Grey
RAL - 7032



11-24-046
Siemens Grey BS - K



11-24-138
Pebble Grey - E
RAL - 7032 - E



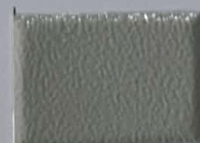
11-24-113
Siemens Grey - E



11-24-193
Ansi Grey



11-24-062
Bone Grey - SS



11-24-097
Panel Grey
RAL - 7038 - Agate Grey



11-24-249
Papyrus White
RAL - 9018



11-24-078
Light Grey - BS
RAL - 7035 - BS



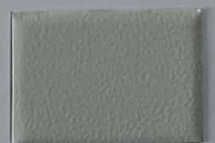
11-24-034
Light Grey - Std
RAL - 7035 - Std



11-24-257
Light Grey - I
RAL - 7035 - I



11-24-060
Biesse Grey
RAL - 7035 - Light Grey



11-24-150
Light Grey - SS
RAL - 7035



"V - TUFF" : EPOXY POLYESTER - (HYBRID) - STRUCTURE - FINISH

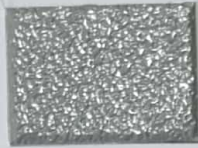
(Page No - 9)



11-24-043
Munshell Grey



11-24-192
Window Grey - B
RAL - 7040



11-24-173
Window Grey
RAL - 7040



11-24-125
Traffic Grey - A
RAL - 7042



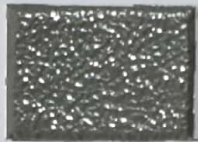
11-24-020
Silver Grey
RAL - 7001



11-24-092
Platinum Grey
RAL - 7036



11-24-245
Tele Grey 2
RAL - 7046



11-24-050
Dusty Grey
RAL - 7037 Std



11-24-141
Grey - CC 27



11-24-137
DA Grey - O



11-24-011
Iron Grey
RAL - 7011



11-24-004
IS 632 - DA Grey
RAL - 7012 - Basalt Grey



11-24-120
Traffic Grey - B
RAL - 7043



11-24-197
Basalt Grey - K
RAL - 7012



11-24-083
Elephant Grey
RAL - 7022 - Umbra Grey



11-24-190
Umbra Grey
RAL - 7022 - A



11-24-135
Graphite Grey
RAL - 7024



11-24-116
Anthracite Grey
RAL - 7016 - A



11-24-146
RAL - 7016



11-24-154
RAL - 7016 - AG / DMG



11-24-142
Black Grey - SS
RAL - 7021



11-24-239
Pride Blue
RAL - 5004 - Black Blue



11-24-157
Conductive Black



11-24-134
Black Leath



11-24-005
Jet Black
RAL - 9005

Epoxy Polyester - Structure Finish - Tip No - 5

Curing Temp 185 Deg Cent for 12 min

In case of following problem Ref Point No

Nature of Problem	Point No
Poor Mechanical Properties	10
Poor Powder Charging	12
Cratering	13
Pin Hole	7
Usage	Indoor Application

NOTE : To get good structure finish push the powder coated trolley, when the oven temperature is more than 170 Deg C



"V - TUFF" : EPOXY POLYESTER - (HYBRID) - STRUCTURE - FINISH

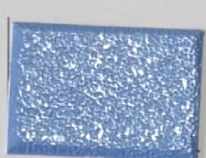
(Page No - 10)



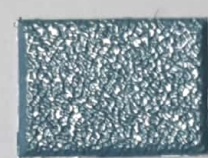
11-24-288
AMS Satin Blue
IS 177 - Satin Blue



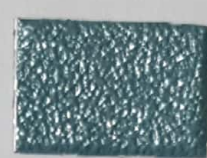
11-24-172
Bosch Blue



11-24-181
APC Blue



11-24-058
Smoke Grey
IS 692



11-24-039
Smoke Grey



11-24-198
Cool Blue - K



11-24-044
Lista Blue



11-24-053
VIP Blue



11-24-063
ACE Blue



11-24-242
Blue - C



11-24-031
Light Blue
RAL - 5012



11-24-032
Sky Blue
RAL - 5015



11-24-012
Deep Blue
IS 176 - Phirozi Blue



11-24-207
Capri Blue
RAL - 5019



11-24-152
Gentian Blue
RAL - 5010



11-24-155
Nordson Blue
RAL - 5007 - Brilliant Blue



11-24-014
Indigo Blue
RAL - 5005 - Signal Blue



11-24-040
Sun Rise Blue
Pepsi Blue - Ramson Blue



11-24-166
Ultra Marine Blue
RAL - 5002



11-24-253
GMC Grey



11-24-017
Light ADM Grey
IS 697



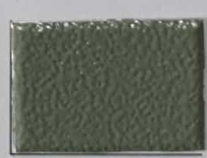
11-24-018
Light Grey - BHEL
IS 631



11-24-307
Light Grey - S
IS 631



11-24-093
Light Grey
IS 631 Std



11-24-200
Light Grey - K
IS 631



11-24-026
Opaline Green
IS 275



11-24-045
Pale Green
RAL - 6021



11-24-109
Apple Green
IS 281



11-24-174
Reseda Green
RAL - 6011



11-24-064
Aryan Green



11-24-033
Yellow Green
RAL - 6018



11-24-067
Brilliant Green
IS 221



11-24-030
Reliance Green



11-24-196
Green (K)
RAL - 5021



11-24-048
Bus Green
IS 299

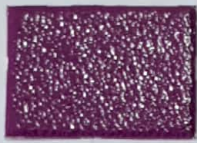


"V - TUFF" : EPOXY POLYESTER - (HYBRID) - STRUCTURE - FINISH

(Page No - 11)



11-24-230
Purple



11-24-171
Signal Violet
RAL - 4008



11-24-228
Pink (K)
RAL - 4010 - Tele Magenta



11-24-144
Sulphur Yellow
RAL - 1016



11-24-015
Golden Yellow
RAL - 1003 - Signal yellow



11-24-008
Cat Yellow
IS 359 - Middle Buff



11-24-035
Maini Yellow
IS 368 - Traffic Yellow



11-24-112
IS 557 - Light Orange
RAL - 2000 - Yellow Orange



11-24-013
Traffic Orange
RAL - 2009



11-24-061
Suffex Red



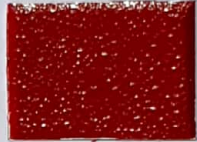
11-24-148
International Orange
Is 592



11-24-191
Vermillion
RAL - 2002 - A



11-24-164
Traffic Red
RAL - 3020



11-24-289
Signal Red
RAL - 3001



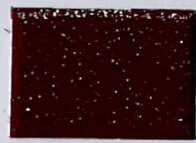
11-24-055
PO Red



11-24-161
Cherry Red
RAL - 3003 - Ruby Red



11-24-158
Maroon
RAL - 4004 - Claret Violet



11-24-195
Wine Red
RAL - 3005



11-24-199
Coffee Brown (K)



11-24-066
Hardware Brown



Exhibition and Paint / Powder Association Awards



"V - SHIELD" : PURE POLYESTER - STRUCTURE - FINISH

(Page No - 12)



12-24-018
Signal White
RAL - 9003



12-24-088
Traffic White
RAL - 9016



12-24-003
Grey White
RAL - 9002



12-24-029
KOYAL Ivory
RAL - 1013



12-24-001
IR Beige



12-24-101
Simenes Grey (S)



12-24-010
Pebble Grey
RAL - 7032



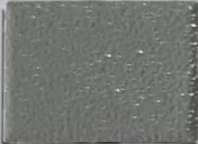
12-24-087
Diamond Grey
RAL - 7032 - Pebble Grey



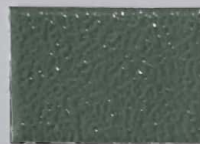
12-24-033
Simenes Grey
RAL - 7044 - Silk Grey



12-24-038
Light Grey
RAL - 7035



12-24-017
Munshell Grey
RAL - 7040 - Window Grey



12-24-026
Light Grey
IS 631



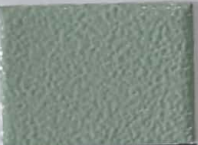
12-24-061
Dusty Grey
RAL - 7037



12-24-006
IS 632 - DA Grey
RAL - 7012 - Basalt Grey



12-24-089
Iron Grey
RAL - 7011



12-24-071
Light ADM Grey
IS 697



12-24-032
Light Blue
RAL - 5012



12-24-030
KOEL Blue



12-24-024
VIP Blue



12-24-016
Black
RAL - 9005 - Jet Black



12-24-054
IS 536 Fire Red
RAL - 2002 - Vermilion



12-24-015
PO Red
IS 537 - Signal Red



12-24-090
Signal Red
RAL - 3001



12-24-007
Cat Yellow
IS 359 - Middle Buff



12-24-037
RAL 1007 - Daffodil Yellow
IS 356 - Golden Yellow



12-24-055
Yellow Green
RAL - 6018



12-24-021
Marine Green



12-24-004
Onan Green

Pure Polyester - Structure Finish - Tip No - 6	
Curing Temp	200 Deg Cent for 12 min
In case of following problem Ref Point No	
Nature of Problem	Point No
Poor Mechanical Properties	10
Poor Powder Charging	12
Cratering	13
Pin Hole	7
Usage	Very Good for Outdoor Application
NOTE : To get good structure finish push the powder coated trolley, when the oven temperature is more than 170 Deg C	



EPOXY POLYESTER - (HYBRID) TEXTURE FINISH

(Page No - 13)



11-25-025
Signal White
RAL - 9003



11-25-078
Traffic White
RAL - 9016



11-25-119
Lenin White



11-25-084
Munshell N 9



11-25-097
GE HC GREY N9



11-25-155
Strome White



11-25-089
GE HC GREY



11-25-013
Off White CC - 21



11-25-165
Taupe



11-25-037
Nut White



11-25-083
Munshell N 8
RAL - 7047 - Tele grey-4



11-25-160
Co-White - W



11-25-002
Agate Grey
RAL - 7038



11-25-010
Co-Soft White
RAL - 7035 - Light Grey



11-25-024
Grey White
RAL - 9002



11-25-018
Cool Grey



11-25-168
Moon Shell Grey



11-25-092
GE N 7



11-25-046
Munshell Grey
RAL - 7040 - Window Grey



11-25-166
New Warm Grey



11-25-058
Pebble Grey
RAL - 7032



11-25-096
Light Grey
IS 631



11-25-087
Dusty Grey
RAL - 7037



11-25-158
New Cool Grey
RAL - 7042 - Traffic Grey - A



11-25-128
Tele Grey
RAL - 7046



11-25-133
LED Grey



11-25-157
Grey - N



11-25-008
Grey CC - 27



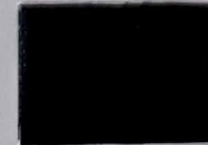
11-25-122
D2 RAL - 4000



11-25-061
IS 632 - DA Grey



11-25-141
UPS Grey



11-25-042
Anthracite Grey
RAL - 7016



11-25-033
CZ Grey



11-25-053
Axle Black



11-25-032
Graphite Grey
RAL - 7024



"V - TUFF" : EPOXY POLYESTER - (HYBRID) - TEXTURE - FINISH

(Page No - 14)



11-25-167
Graphite Grey M02



11-25-095
Black Grey
RAL - 7021



11-25-027
Black Grey
RAL - 7021



11-25-011
Dead Matt Black
RAL - 9004



11-25-138
Wrinkle Black



11-25-023
Revan Black
RAL - 9017 - Traffic Black



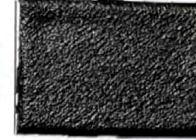
11-25-132
Black (U)



11-25-041
Revan Black (Std)



11-25-082
Signal Black
RAL - 9004



11-25-005
Black
RAL - 9011 - Graphite Black



11-25-009
CO Soft Blue
RAL - 5024 - Pastel Blue



11-25-012
Light Blue
RAL - 5012



11-25-066
French Blue



11-25-004
IS 104 - Azure Blue



11-25-150
Blue - SSI



11-25-111
Lilac Blue
RAL - 4005



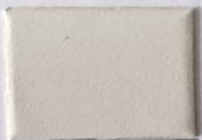
11-25-063
Tejas Green



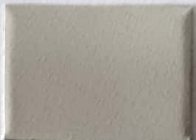
11-25-019
IS 538 - Post Office Red
RAL - 3002 - Carmine Red

Texture Finish - Tip No - 7	
Epoxy Polyester- Indoor App.185 Deg -12 min	
Pure Polyester- Outdoor App.200 Deg -12 min	
In case of following problem Ref Point No	
Nature of Problem	Point No
Poor Mechanical Properties	10

"V - SHIELD" : PURE POLYESTER - TEXTURE - FINISH



12-25-033
Traffic White
RAL - 9016



12-25-034
Light Grey
RAL - 7035



12-25-006
Pebble Grey
RAL - 7032



12-25-018
Munshell Grey
RAL - 7001



12-25-008
Dusty Grey
RAL - 7037



12-25-019
Dusty Grey New
RAL - 7037



12-25-030
DA Grey
IS 632



12-25-004
Dry lac Blue
RAL - 5005 - Signal Blue



12-25-009
Signal Black
RAL - 9004



12-25-002
Revan Black



"V - TUFF" : EPOXY POLYESTER - (HYBRID) - METALLIC - FINISH

(Page No - 15)



11-26-G-003
Metallic Gold - Glossy



11-26-S-090
Gold D - Satin



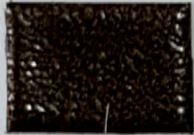
11-26-M-011
Medium Bronze - Matt



11-26-G-070
Metallic Copper 1 - Glossy



11-26-G-100
Metallic Copper 2 - Glossy



11-26-ST-104
Antique Gold



11-26-ST-039
Antique Copper



11-26-ST-021
Antique Silver



11-26-HT-036
Hammer Tone Grey 1



11-26-HT-057
Hammer Tone Grey 2



11-26-T-083
White Metallic - Texture



11-26-T-067
L M Grey - Texture



11-26-G-093
Sparkle Silver W



11-26-G-026
Silver Ash - Glossy - O



11-26-G-004
Silver Ash - Glossy



11-26-G-012
GP Silver - Glossy



11-26-G-013
Metallic Silver - Glossy



11-26-G-078
Metallic Silver A - Glossy



11-26-G-001
Grey Aluminium - Glossy
RAL - 9007



11-26-G-085
Pearl Beige - Glossy
RAL - 1035



11-26-G-035
White Aluminium - Glossy
RAL - 9006



11-26-M-060
White Aluminium - Matt
RAL - 9006 (U)



11-26-M-010
White Aluminium - Matt
RAL - 9006



11-26-M-040
Bosch Metallic grey - Matt



11-26-G-005
Bright Silver - Glossy



11-26-S-080
ARK Silver - Satin



11-26-S-022
Electrex Silver - Satin



11-26-M-017
Silver 3 - Matt



11-26-ST-088
White Aluminium - Structure
RAL - 9006



11-26-T-009
Grey Metallic - Texture



11-26-G-087
California Grey - Glossy



11-26-G-071
Diamond Metallic - Glossy



11-26-M-031
Brown Metallic - Matt



11-26-M-014
Dark Bronze - Matt



11-26-G-096
Black Metallic - Glossy



"V - SHIELD" : PURE POLYESTER - METALLIC - FINISH

(Page No - 16)



12-26-G-025
Gold (K) - Glossy



12-26-G-030
ITC Gold - Glossy



12-26-S-010
Ideal Gold - Satin



12-26-S-017
Maroon Gold - Satin



12-26-G-037
Shell Copper Metallic - Glossy



12-26-S-028
ITC Champaign Gold - Satin



12-26-G-031
Silver Grey Metallic - Glossy
RAL - 7001



12-26-S-005
White Aluminium - Satin
RAL - 9006



12-26-T-009
Metallic Ash - Texture



12-26-T-010
PLP Silver - Texture
Traffic Grey - A



12-26-G-004
Grey Aluminium - Glossy
RAL - 9007



12-26-G-027
Metallic Black - Glossy

Metallic Finish - Tip No - 8	
Epoxy Polyester- Indoor App 185 Deg -12 min	
Pure Polyester- Outdoor App 200 Deg -12 min	
In case of following problem Ref Point No	
Nature of Problem	Point No
Poor Pencil Hardness	11
Poor Powder Deposition	13
NOTE 1: For Metallic shades keep the fluidization of hopper to bare minimum to avoid patchiness	
NOTE 2: To get better aesthetic, it is advised to use clear coat on top of metallic finishes for better performance	



Client Appreciation Awards



"V - GUARD" : PURE EPOXY - ALL FINISHES

(Page No - 17)



13-24-005
Grey White
RAL - 9002
Structure Finish



13-24-007
Light Grey
RAL - 7035
Structure Finish



13-24-004
Pebble Grey
RAL - 7032
Structure Finish



13-24-003
Light Grey
IS 631
Structure Finish



13-24-010
Steel Blue
RAL - 5011
Structure Finish



13-24-008
Black
RAL - 9005
Structure Finish



13-22-028
Pebble Grey
RAL - 7032
Satin Finish



13-22-007
RAL - 7045
TELE Grey - 1
Satin Finish



13-23-002
DA Grey Primer
IS 632
Matt Finish



13-22-021
Ultramarine Blue
RAL - 5002
Satin Finish

Pure Epoxy Finish - Tip No - 9	
Curing Temp	185 Deg Cent for 12 min
In case of following problem Ref Point No	
Nature of Problem	Point No
Pin Hole	7
Poor Mechanical Properties	10
Usage	Interior Corrosive Application

"V - TUFF" : HYBRID - ZINC POWDER - PRIMER



11-P-22-009
White
RAL - 9016



11-P-22-040
Light Grey
RAL - 7035



11-P-22-002
Pebble Grey
RAL - 7032



11-P-23-025
Window Grey
RAL - 7040



11-P-22-058
Zinc Yellow

Hybrid Powder Primer - Tip No - 10	
Curing Temp	185 Deg Cent for 12 min
In case of following problem Ref Point No	
Nature of Problem	Point No
Pin Hole	7
Usage	Primer Coat for EP/ PP/ PE Powder

"V - GUARD" : PURE EPOXY - ZINC RICH POWDER - PRIMER



13-P-22-028
Pebble Grey
RAL - 7032 - Primer
Satin Finish



13-P-22-007
RAL - 7045
Tele Grey - 1 - Primer
Satin Finish



13-P-23-002
DA Grey Primer
IS 632 - Primer
Matt Finish



13-P-22-021
Ultramarine Blue
RAL - 5002 - Primer
Satin Finish



13-23-001
Black
RAL - 9005 - Primer
Matt Finish

Pure Epoxy Powder Primer - Tip No - 11	
Curing Temp	185 Deg Cent for 12 min
In case of following problem Ref Point No	
Nature of Problem	Point No
Pin Hole	7
Usage	High Performance Primer Coat for EP/ PP/ PE Powder



POLYURETHANE (PU) POWDER PRIMER (WOOD COAT) FOR SUBLIMATION PROCESS

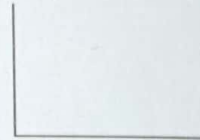
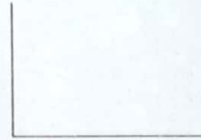
(Page No-18)



14-22-002
RAL - 8023 Orange Brown
Satin



14-22-001
Brown - 1
Satin



14-23-001
RAL - 9010 Pure White
Matt



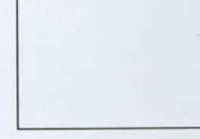
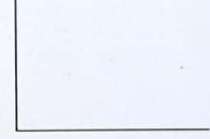
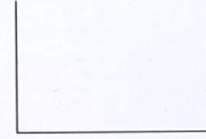
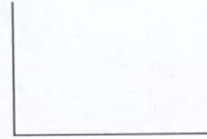
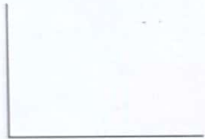
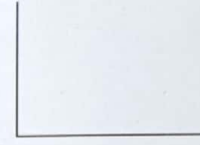
14-23-004
RAL - 1024 Ochre Yellow
Matt



14-23-003
IS - 360 Deep Buff
Matt



14-23-002
RAL - 8000 Green Brown
Matt



14-25-002
RAL - 1005 - Honey Yellow
Texture



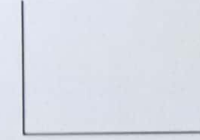
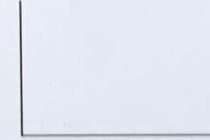
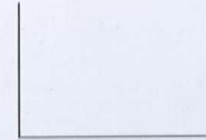
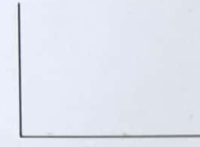
14-25-003
IS - 362 - Middle Stone
Texture



14-25-001
Earth Brown
Texture



14-25-004
Peanut Brown
Texture



WOOD COATED FINISH

